

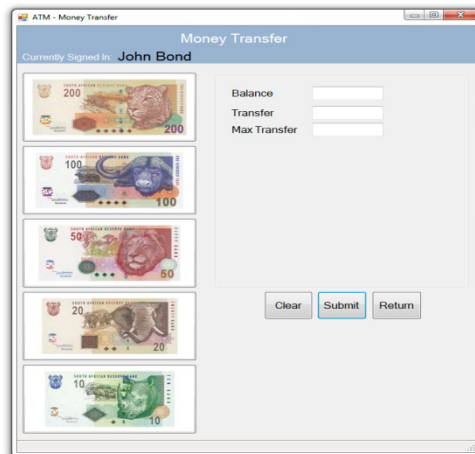
Cashless Society

OBJECTIVE

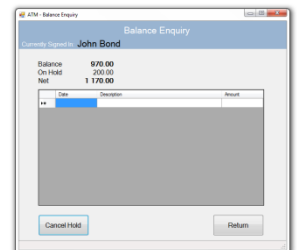
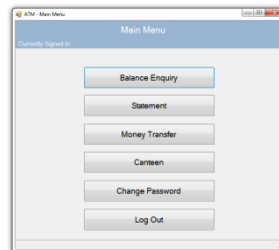
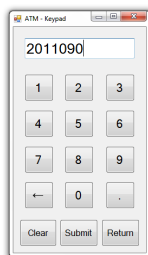
The objective of the Cashless Society application is to have a controlled moneyless environment in the correctional facility, allow the inmate to transfer his/her money from one account to another, make a balance enquiry and draw a statement of his/her account.

BENEFITS

With the Cashless Society application the facility removes the handling and transferring of actual cash between the residents, thereby reducing risks, violence and corruption, and prevent corruption between inmates and staff. The application assists in the administration of deposits for and purchases by residents.



- To assist illiterate residents, Cashless Society uses images of the local payment currencies with which the residents are familiar with.
- The facility's administration personnel can do enquiries into the resident's cash transactions and balances.



All cash is impounded at the entrance to the facility, being it the visitors' entrance by cashiers, via the post, or via bank electronic funds transfers (EFT) into the facility's bank account and processed as deposits into the residents own electronic cash account (or electronic wallet).

Inside the facility all monetary transactions (cash balance and transactions enquiries, and cash transfer to other cashless applications inside the facility) are executed by the residents themselves through the Cashless Society application on touch screen ATM's machines.



FUNCTIONALITIES

- Login
- Balance enquiry
- Transactions enquiry
- Transfer funds to third party application
- Canteen application
- Administrator enquiries functionality
- Cash taking kiosk (cashiers)
- Cash deposit registering
- Cash payout on release

For more information on any of our products or services please visit us on the Web at:
www.superitum.com
+27 (0)12 345 4248

Fingerprint Authentication

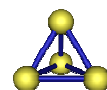
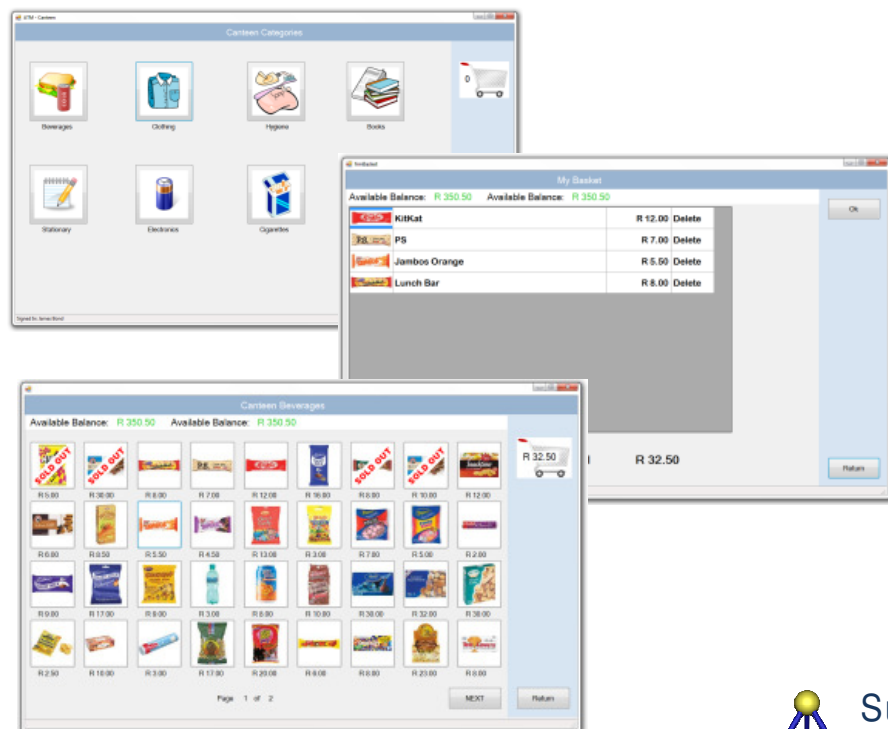


- The application makes use of fingerprint biometrics to authenticate the resident when logging into the ATM in the facility.
- Residents' fingerprints are enrolled with submission to the facility.
- Residents use their resident number (inmate number) to login to the system on the touch screen, together with the fingerprint authentication biometrics.

Integration with other Applications

The Cashless Society application can integrate with other cashless systems in the facility. This normally includes the residents' telephone system and the canteen system.

The Cashless Society also includes, as an optional module, a fully integrated Canteen Ordering system with inventory control.



Superitum